



ES

ES 300h / ES 250

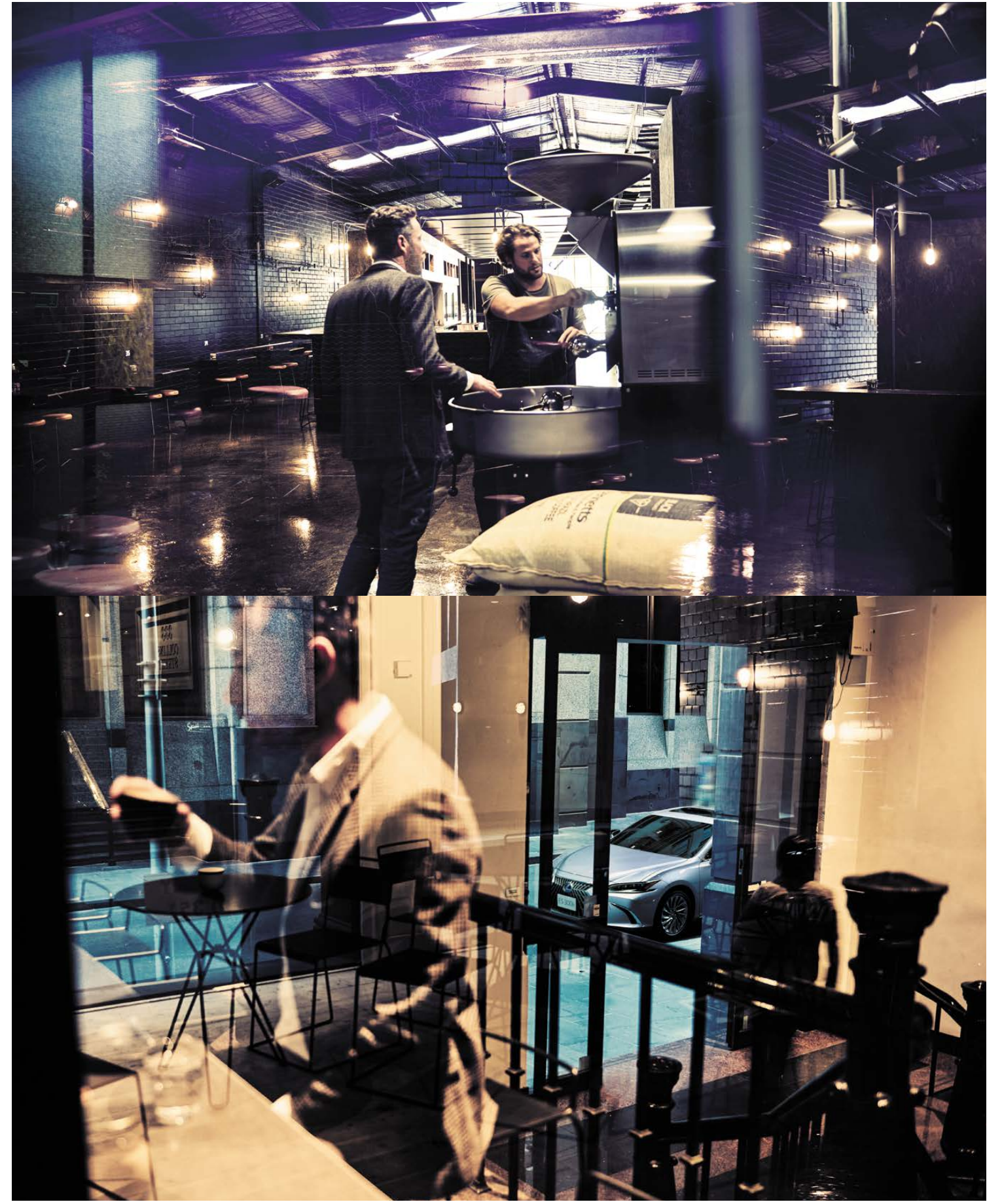
Overseas model shown.



ES	» P1
EPISODE 7	» P13
TAKUMI	» P50
COLOURS & TRIMS	» P52
LEXUS OWNERSHIP SOLUTIONS	» P65
SPECIFICATIONS	» P68





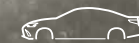




LEXUS
EPISODE
SEVEN

1

CONCEPT



P14

2

DESIGN



P20

3

PERFORMANCE



P25

4

FEATURES



P33

5

SAFETY



P40

6

F SPORT



P44

7

TAKUMI



P50

CONCEPT



Is it possible to experience extraordinary joy in daily life? We created the ES to do just that. To the regular tasks of moving you from place to place, it adds pleasure, comfort, and peace of mind, turning the routine into special experiences. The rejuvenated ES injects excitement into your everyday.

[DISCOVER MORE ABOUT THE ES](#)



» EPISODE





We further refined the renowned quietness and ride comfort of the ES's spacious interior, then heightened the experience of driving pleasure. Even as you relax in comfort, the elegant design catches eyes on the street. As Lexus's unique luxury sedan, the ES goes a step beyond to provide premium comfort.



DESIGN



Given the beautiful proportions, low centre of gravity, and coupe-like styling, you would never guess at the spacious interior. It delivers an emotional design that excites occupants, while capturing the attention of people passing by.

2

» EPIISODE



EXTERIOR

The flowing roof line that slopes towards the rear complements the balanced proportions and accentuates the wide, low stance. The sharp front face and rich contrast of the side profile contribute to a powerful presence that invites you to experience exhilarating driving.

[DISCOVER MORE ABOUT THE ES](#)



INTERIOR

The interior provides a comfortable, human-centred space. Controls in the snug cockpit have been laid out so that drivers don't need to change their line of sight or posture, while passengers enjoy a calm, relaxing space with ample legroom.

[DISCOVER MORE ABOUT THE ES](#)





PERFORMANCE



Simply depress the accelerator or turn a corner, and you'll realise the ES refines the basics of performance. The smooth acceleration and optimised cornering control realise response that resonates with the driver's feelings. Even turning at an intersection you often drive through, you'll experience a warm thrill of excitement.

[DISCOVER MORE ABOUT THE ES](#)

3

» EPISODE



GA-K (Global Architecture-K) platform
Lexus developed the platform for the ES from scratch to create the foundation for excellence in core criteria, including design, dynamic performance, ride quality, quietness, and safety. For dynamic performance, the location and angle of the steering wheel and pedals were reviewed to create a posture that supports easy driving. To augment the vehicle's excellent DNA with its low centre of gravity and uniform lateral weight distribution, the geometry of the high-rigidity body and chassis were optimised to deliver excellent straight-line driving stability, stable cornering, and braking stability. In addition, the integration of advanced features including parallel rack EPS (Electric Power Steering), AVS (Adaptive Variable Suspension system)¹, and performance dampers provide secure and pleasant handling that closely responds to the driver's intentions. Finally, we aggressively blocked vibrations and reduced every aspect of sensitivity to vibration to reduce noise and vibrations from the engine and tyres, to provide a comfortable ride with outstanding quietness.

Multi material body

The ring-shaped body structure helps to reduce body torsion. A V-shaped brace behind the rear seats contributes to coupling rigidity for excellent stability. In addition, body rigidity is enhanced by the extensive use of advanced technologies including laser screw welding and structural body adhesives. Optimising the use of hot-stamp and high-tensile steel in key body components also reduces weight while contributing to excellent collision safety.



EPS (Electric Power Steering)

The parallel rack electric power steering system provides crisp, clean response as soon as you start turning the steering wheel. The steering column offers enhanced rigidity and excellent steering feel.



Performance dampers²

Performance dampers in the front and rear boost the feeling of unity between car and driver. The dampers quickly absorb body flex and minuscule vibrations while driving to sharpen handling characteristics and contribute to the excellent ride comfort and quietness.



Engine mount

Large mounts positioned in the front and rear of the engine decrease vibrations at engine start-up. In addition, they reduce idling vibration, low-frequency engine noise during low-rpm driving, and engine noise during high-rpm driving. By suppressing vibrations transmitted from the engine, they also contribute to the excellent ride comfort and quietness.

¹Available on ES 300h F Sport models only.

²Available on F Sport & Sports Luxury models only.



Aerodynamics

Aerodynamic performance is seamlessly integrated into the elegantly-shaped silhouette so that air flows from the rear seats to the trailing edge of the boot. Fins on the underbody cover and rear combination lamps reduce air resistance, contributing to the quiet interior and excellent fuel efficiency. The controlled air flow also enhances driving stability.



Suspension

The geometry of the McPherson strut front suspension was optimised to realize excellent steering response and turning stance, together with premium ride comfort. The arm positions on the trailing-arm double-wishbone rear suspension were optimised to smoothly handle uneven road surfaces, providing an excellent blend of handling stability and ride comfort. In addition, the shock absorbers on both the front and rear suspension incorporate swing-valve shock absorbers that respond to even minuscule movements, to provide an exceptionally flat feel when starting up, as well as excellent straight-line stability when driving at speed.

Brakes

Engineered for excellent braking force, control and response, the brakes provide intuitive response to the driver's input, feeding driving pleasure by supporting exciting driving with peace of mind. In addition, the ES is equipped with an electric parking brake, further enhancing easy operation and driving enjoyment.



Drive mode select

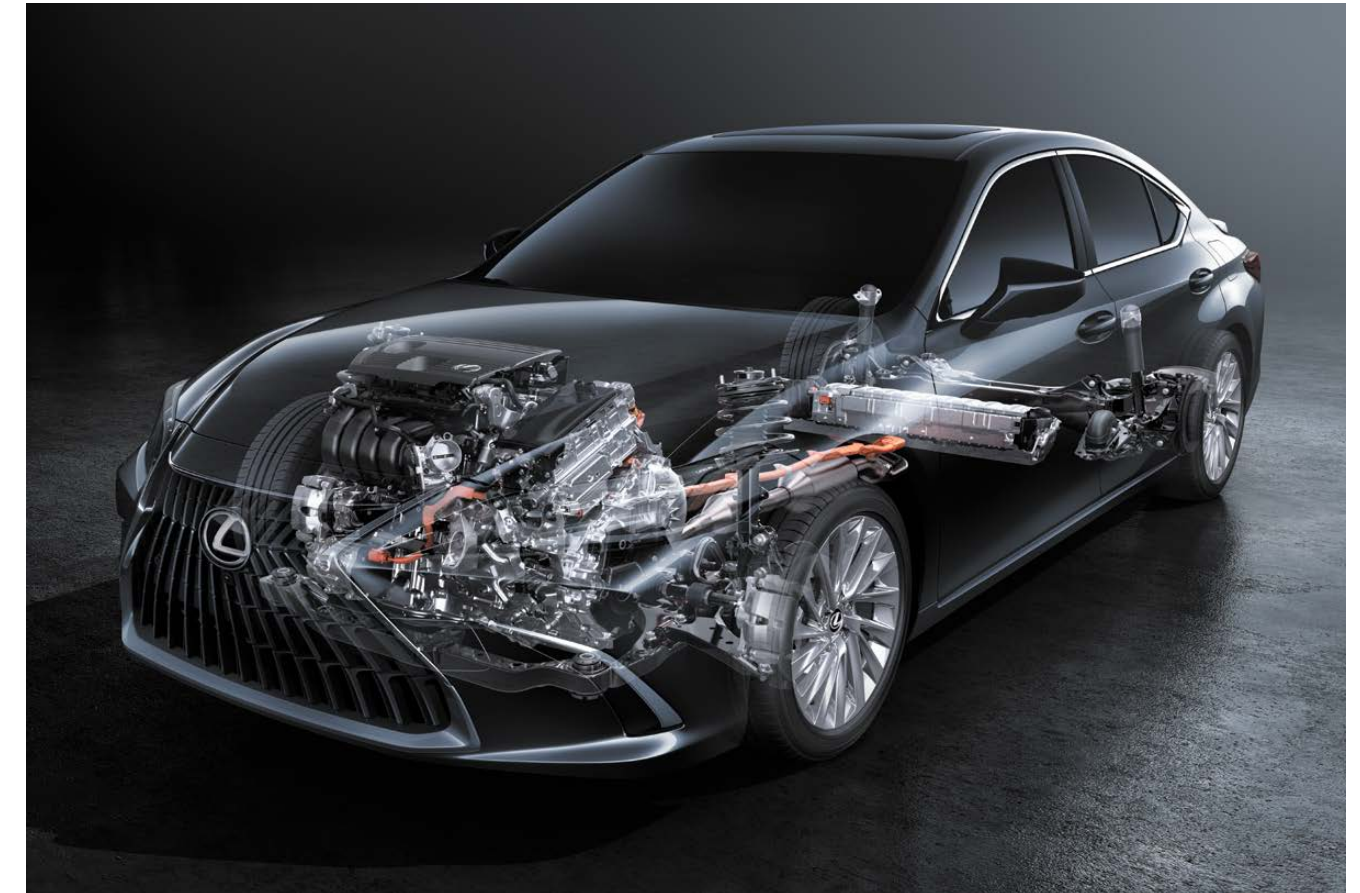
Drive mode select provides integrated control of multiple systems to let you tune performance to suit your driving style. You can select and change between three modes: Eco, Normal, Sport.



Overseas ES 300h model shown.

Direct Shift-8AT¹

The Direct Shift-8AT delivers both exciting performance with direct response and outstanding fuel efficiency. The 8-speed configuration provides a 20% wider gear ratio, contributing to powerful acceleration and quiet, smooth performance during high-speed cruising, while enabling continuous operation in the engine's high-efficiency zone to significantly enhance fuel efficiency. In addition, maximizing use of the lock-up control delivers direct response that quickly responds to accelerator operation.



Lexus Hybrid Drive

The hybrid system aims to transform people's image of hybrid performance even as it realises exceptional fuel efficiency. By combining the excellent response of the 2.5-litre L4 engine with a compact, small lightweight battery and sophisticated control capabilities, it delivers a smooth natural acceleration feel, responding instantly to accelerator inputs.

2.5-litre L4 engine (A25A-FXS/A25B-FXS)

The 2.5-litre L4 engine delivers a sophisticated blend of dynamic performance, fuel efficiency and environmental friendliness. Reviewing the engine's basic design, adopting a longer stroke and high-efficiency intake ports, and enhancing the flow of air in the cylinders realise high-speed combustion. Additional refinements include multi-hole direct injectors, a continuously variable-capacity oil pump, a variable cooling system, and VVT-iE on the intake-side valves.²



¹Available on ES 250 models only.
²VVT-iE: Variable Valve Timing-intelligent by Electric motor.
 Overseas model shown. Australian specifications & features may differ.
 See your Lexus dealer for details.



FEATURES



Refining the advanced levels of luxury and utility experienced in the previous generation model enables the driver and passengers to enjoy premium comfort, for a quality of luxury comfort that is consistently a step ahead.



» EPISODE

The sharp face is focused on the Lexus spindle grille, a core design cue that is heightened by the compact LED headlamps, that integrate innovative BladeScan AHS headlamps¹. The DRL (Daytime Running Lamps) emit an L-shaped light that radiates a smart and fearless expression. L-shaped LED rear combination lamps further embed

the distinctive Lexus identity. Advanced features including acoustic glass and seatback silencers contribute to the extremely low noise levels in the cabin, further enhancing this relaxing private space. It is a refined expression of Lexus hospitality that remains ahead of its time in shaping perceptions of luxury.



3-eye Bi-Beam LED headlamps¹

The slim, square design of the 3-eye Bi-Beam LED headlamps projects a sharp futuristic look, heightened by the thin light beam design of the turn signal lamps. It integrates innovative BladeScan AHS headlamps to help provide excellent night-time visibility, to help support early recognition of pedestrians and road signs for reliable, stress-free driving.

LED rear combination lamps

The L-shaped rear combination lamps reinforce the ES's Lexus identity. The three-dimensional design was engineered to combine high visibility with distinctive style.



Moonroof

The moonroof lets in an abundance of light, adding to the spacious airy feeling in the cabin. It opens and closes, tilts up and down at the touch of a button. A low-speed motor provides quiet operation. For safe operation during closing, the moonroof stops temporarily in a safe position, and requires a further press of the close switch to fully close it.



Hands-free power boot²

Even if both hands are full, when carrying the Electronic Key you can open and close the boot automatically by moving your foot under the rear bumper and out again.

Rear bumper

The character lines of the side silhouette converge to give the rear a dynamic presence. Combining high rigidity with excellent recyclability, the rear bumper accentuates this presence, endowing it with a strong sense of stability.



Acoustic glass

The windshield and front door windows are fitted with a special acoustic glass with excellent sound insulating properties.



¹Available on F Sport & Sports Luxury models only.
²Available on ES 300h Luxury + EP, and all F Sport & Sports Luxury models only.
Overseas model shown. Australian specifications & features may differ.
See your Lexus dealer for details.



EMV touch displays/meter/colour head-up display
The EMV (Electro Multi-Vision) enables simple touch operation, with a high-resolution wide screen that is easy-to-read even when the menu and maps are displayed simultaneously. Ergonomics helps refine the display's position in front of the driver for easy viewing and operation, optimising the angle and the position of the unit to minimise intrusion into the driver's line of sight. The result is an interface that is easy to focus on and enables intuitive fingertip operation, while maintaining forward visibility and a comfortable driving position.

The EMV displays incoming calls, audio system and other information, and coordinates display of select information with the multi-information display integrated into the colour TFT (Thin Film Transistor) Optitron meter and the large colour head-up display¹ positioned in the driver's line of sight. With the latest Apple CarPlay® & Android Auto™² compatibility, you can access the same familiar interface from your iPhone® or Android™. Simply connect your phone to get directions, make calls, send and receive messages via Siri® or Google Assistant™. Speak to your dealer about device compatibility.

Active Noise Control⁵
Active Noise Control uses engine rpm and a dedicated microphone to identify and reduce muffled engine sound by outputting an opposite-phase sound from the speakers to cancel it out, significantly enhancing quietness in the cabin.

Mark Levinson®³ Premium Surround Sound System⁴
Adopting a PurePlay layout, 7 Unity speakers with identical performance are arranged along the shoulder line which runs from the instrument panel to the door tops, effectively surrounding the cabin. By placing speakers close to occupants' ears so there are fewer obstructions, this layout realises clear sound, even in the rear seats. The rich, powerful low-frequency sounds from the woofers combine with advanced sound technology to provide a crisp audio experience that envelops passengers.



nanoe-X®³
The climate control system integrates advanced nanoe-X technology, which releases microscopic, negatively-charged "nanoe-X" particles containing 10 times the OH radicals of conventional nanoe systems, helping to purify the cabin air and effectively deodorize the seats and upholstery. The high moisture content of ions displays a healthy moisturizing effect on skin and hair.



Wireless charger¹
For wireless charging of batteries, simply place Qi-compatible smartphones and electronic devices on the charging tray in the centre console box.

Console box
The spacious utility box in the console box integrates two USB charging ports for convenient charging and use of portable devices while you are on the move. A lip in the box edge enables smooth routing of cables, to keep your mobile phone close at hand while it is charging.



¹Not available on ES 250 Luxury models.
²Only Qi-supported devices compatible. Refer to device manufacturer. May require additional purchase of accessory to support wireless charging. Requires compatible device, USB connection, mobile data, network reception & GPS signal. Mobile usage at user's cost. Apps subject to change. For details see lexus.com.au/connectivity. All images indicative only. Functionality varies depending on device. CarPlay®, iPhone® and Siri® are a trademarks of Apple, Inc. registered in the U.S. and other countries. Android™, Android Auto™ and Google Assistant™ are trademarks of Google LLC.
³Product & company names are trademarks of their respective owners.
⁴Available on F Sport + Enhancement Pack and Sports Luxury models only.
⁵Only available on ES 300h.

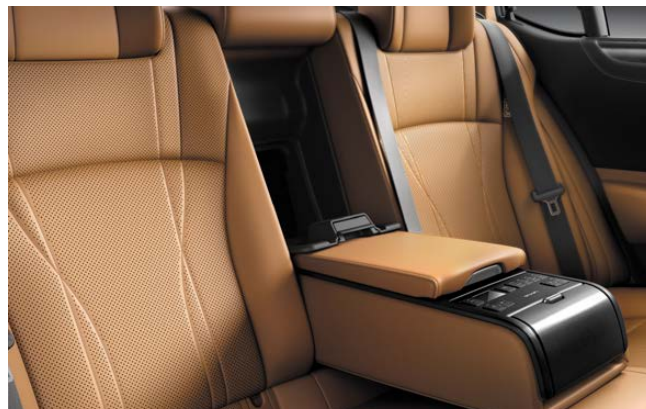


Lexus Climate Concierge

The powerful energy-efficient air conditioning system provides either 2-zone or 3-zone¹ independent control of the temperature in the front and rear seats. A control panel for rear seat passengers is conveniently located in the rear centre armrest.¹

Rear armrest and multi-operation panel¹

The rear seats feature a centre armrest with convenient cupholders. An integrated control panel lets occupants adjust the audio system, seat recline and other settings, further enhancing passenger pleasure.



Boot-through

Boot-through functionality enables the carrying of longer items that won't fit in the boot.



Power rear seats¹

The reclining power rear seats provide up to 8° of recline to create an even more relaxing space.



LED ambient illumination²

Subtle Lexus hospitality is seen in the elegant and functional design of the instrument panel and its real stitching detail. The use of LED ambient illumination to indirectly light the lower instrument panel and front and rear door trim, creates a feeling at night of being gently enveloped. The brightness can be adjusted to suit your preference.



Rear door³/rear window sunshades⁴

Sunshades for the rear door and rear quarter windows, and a power sunshade for the rear window provide shade and privacy in the rear seats.



For a clear field of view when reversing, the rear window sunshade automatically lowers when reverse gear is engaged.

SAFETY



The ES's exciting performance is underpinned by active and passive safety measures that utilise advanced technologies to deepen your peace of mind.

[DISCOVER MORE ABOUT THE ES](#)

5

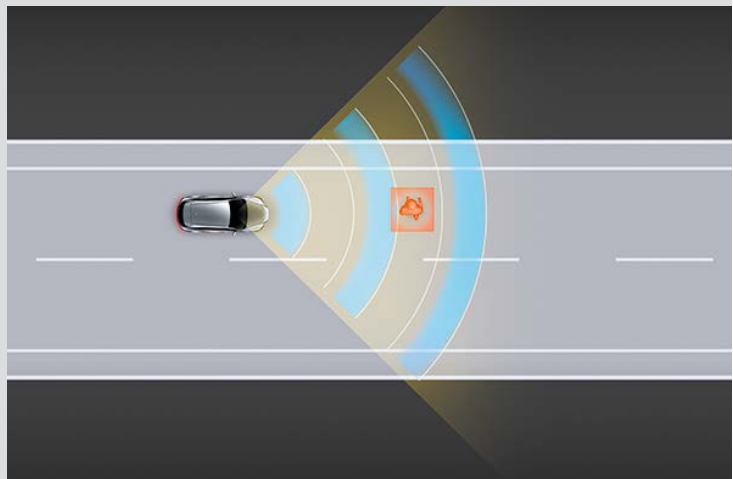
» EPISODE



LEXUS SAFETY SYSTEM +

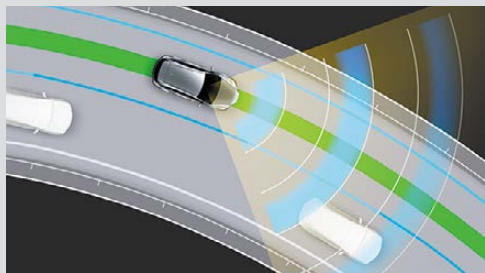
Pre-Collision Safety system (PCS) with Pedestrian and Daylight Cyclist Detection¹

When the millimetre-wave radar and monocular camera sensors detect a collision with a vehicle ahead, a pedestrian during the day or at night, or a bicyclist during the day is likely, it is designed to alert the driver and activate pre-collision brake assist when the driver depresses the brake pedal. If the driver cannot depress the brake pedal, it activates pre-collision braking. In addition, if it detects an oncoming vehicle, it decelerates and helps to mitigate effects of the collision. In the same way, intersection turning assist helps the driver to detect a vehicle or pedestrian in front when turning at an intersection. If the emergency steering assist system detects a collision with a vehicle, pedestrian or bicyclist ahead is likely, there is sufficient space for the vehicle to be steered within its lane and the driver has begun an evasive steering manoeuvre, it assists steering to help enhance vehicle stability and prevent lane departure.



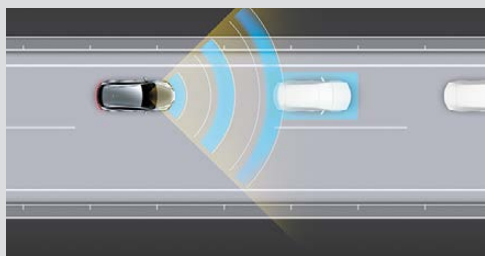
LTA (Lane Tracing Assist)¹

When Lane Tracing Assist with enhanced lane recognition is activated, it alerts the driver of possible lane or road deviations even when lane markings are interrupted, and helps assist steering to avoid them. In addition, while driving on highways and automobile-only roads with All Speed Active Cruise Control activated, it helps assist steering to keep the vehicle in the lane.



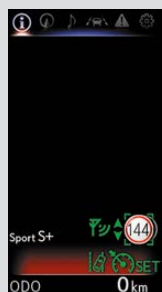
All-Speed Active Cruise Control¹

In addition to maintaining a constant speed, All-Speed Active Cruise Control uses the millimetre-wave radar and monocular camera sensors to detect a vehicle driving ahead and maintain an appropriate distance between vehicles.



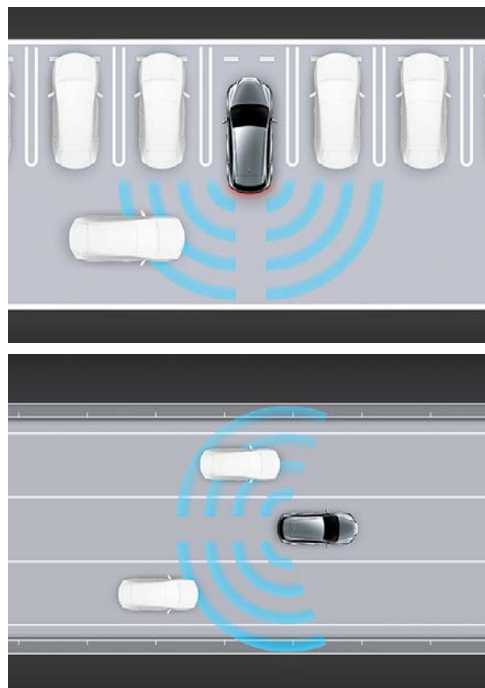
Road Sign Assist (Speed Signs Only)¹

To help support safe driving, RSA uses the monocular camera sensor to detect key speed signs such as speed limit signs, and displays them on the multi-information display. In the event the driver exceeds the detected speed limit, RSA provides a visual notification.



AHS (Adaptive High-beam System)^{1,7}

In the BladeScan AHS, LED light is projected onto a plate rotating at high speed called a 'blade mirror,' with the reflected light passing rapidly through a lens to illuminate the forward direction. The LEDs switch on and off with optimal timing to enable fine control of light distribution, enhancing the range of illumination while blocking a small area in front of the car. This enables the BladeScan system to provide a broad field of high-beam illumination with natural light distribution to enhance the visibility of road shoulders and other more distant areas, supporting early driver recognition of pedestrians and road signs without dazzling the drivers of oncoming or preceding vehicles.



PKSB (Parking Support Brake)¹

PKSB detects stationary objects such as walls in the direction of travel, as well as vehicles and pedestrians approaching from behind while reversing, and alerts the driver on the display and with a buzzer. In addition, in the event that the system determines a collision is likely, it applies drive force and brake force control to help avoid minor collisions and mitigate damage.

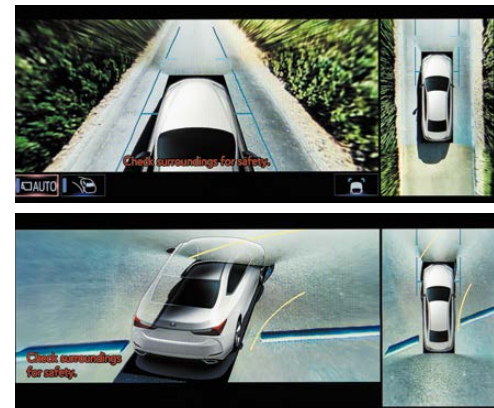
Blind Spot Monitor System¹

When the quasi-millimetre-wave radars in the rear bumper detect vehicles in adjacent lanes that aren't visible in the door mirrors, the system activates an LED warning indicator in the relevant door mirror the moment a vehicle enters this blind spot.



Panoramic View Monitor^{1,2}

To help check areas surrounding the vehicle that are difficult to see from the driver's seat, the system shows a bird's-eye view of the vehicle in real time on the 12.3-inch or 8-inch EMV touch displays, using a composite image taken by cameras mounted on the front, sides, and rear of the vehicle.



SRS (Supplemental Restraint System) airbags

The ES features dual-stage SRS airbags (Front seats), SRS knee airbags (Front seats), SRS side airbags (Front and outboard rear seats) and SRS curtain shield airbags (Front and rear seats).



¹Driver assist feature. Only operates under certain conditions. Check your Owner's Manual for explanation of limitations. Please drive safely.

²Available on ES 250 F Sport, ES 300h F Sport onwards and ES 300h Luxury + EP and ES 300h Sports Luxury models only.

³Connected Services complimentary period ends 3 years from delivery date. Fees and charges may apply thereafter.

Not available outside Australia or if services disabled or terminated. Dependent on 3G/4G enabled DCM, GPS signal strength, mobile network coverage and other factors outside Toyota's control which can limit ability or functionality of system.

Check your Owner's Manual for explanation of limitations. Please drive safely.

⁴Driver assist feature only. Not a substitute for safe driving practices. Not available outside Australia or if service is disabled or terminated. Only operates if vehicle's SOS button is pressed. Dependent on 4G enabled DCM, GPS signal strength, mobile network coverage, operational related components and other factors outside Lexus' control which can limit the ability or functionality of the system.

Check your Owner's Manual for explanation of limitations. Please drive safely.

⁵Driver assist feature only. Not a substitute for safe driving practices. Not available outside Australia or if service is disabled or terminated. Only activates if vehicle's DCM detects airbag deployment or an impact sensor notification. Dependent on 4G enabled DCM, GPS signal strength, mobile network coverage, operational related components and other factors outside Lexus' control which can limit the ability or functionality of the system.

Check your Owner's Manual for explanation of limitations. Please drive safely.

⁶Not available outside Australia or if service is disabled or terminated. Dependent on sufficient battery power, 4G enabled DCM, GPS signal strength, mobile network coverage, operational related components & other factors outside Lexus' control which can limit the ability or functionality of the system. Guest required to obtain Police report. Vehicle location information, if available, only provided to Police. Vehicle recovery not guaranteed. For details, visit <https://www.lexus.com.au/connectivity/lexus-connected-services-faq>.

⁷Available on F Sport & Sports Luxury models only.

Overseas model shown. Australian specifications & features may differ. See your Lexus dealer for details.

F SPORT



F SPORT evolves the Lexus sport DNA that finds its ultimate expression in the LFA supercar, to enable more drivers to experience its exhilarating performance and unique personality. The F SPORT further enhances the driving excitement of the ES so that drivers can enjoy a sense of oneness with the car, born of its ability to respond immediately to their intentions in various situations.



» EPISODE



The F SPORT is designed to extend the limits of the ES's smooth performance. The exterior features an exclusive mesh radiator grille, rear lower bumper garnish, and other design cues that highlight the F SPORT's fearless and aggressive personality. In the cabin, a selection

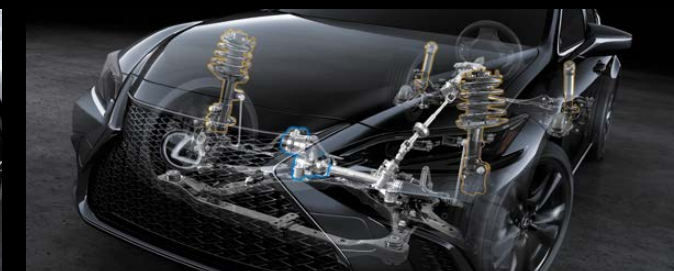
of exclusive features heightens expectation of exhilarating performance. The specially-tuned suspension delivers sharp steering feel, flat cornering and a smooth ride, while additional refinements realise exceptional performance in various driving situations.



A_Front mesh grille / B_Grille molding (jet black plating) / C_Side garnish / D_Alloy wheels / E_Front fender emblems



F_Boot garnish & rear combination lamps molding (jet black plating) / G_Rear bumper



Performance dampers

Performance dampers in the front and rear heighten the sense of oneness between car and driver. They quickly absorb body flex and minuscule vibrations while driving to sharpen handling characteristics, as well as contributing to the excellent ride comfort and quietness.

AVS (Adaptive Variable Suspension system)¹

AVS provide seamless, continuously variable control, electronically optimising the damping force of the shock absorbers in response to the vehicle's movement. It isolates shocks and provides a flat ride even on road surfaces with large undulations and rough patches, further enhancing the excellent steering response and stability while also realising pleasant ride comfort. During cornering, the system works with the specially-tuned suspension to maintain a natural stance, letting you enjoy aggressive driving. In addition, drive mode select offers the choice of Eco, Normal, Sport S/S+, and Custom Modes.

ESE (Engine Sound Enhancement)

ESE enhances the engine sound to heighten the exhilaration of F SPORT performance when the powertrain is in Power mode and Sport S/Sport S+ or Custom Mode is selected in drive mode select.



H_Meters & multi-information display / I_Clock / J_Steering wheel / K_Aluminum pedals / L_Shift lever knob / M_Trim



F SPORT multi-information display

The meter ring on the large TFT (Thin Film Transistor) colour multi-information display slides to the side at a touch of a switch on the steering wheel.



F SPORT meters

Evolved from the LFA supercar, the advanced interface of the F SPORT's sliding meter ring uses motion graphics that combine beautiful design with excellent visibility to display a range of functions that instantly communicate important information according to its priority.



F SPORT front seats

The exclusive sports seats evoke the sharp design of the LC's sports seats. An 'integrated foaming' structure contributes to the excellent fit and holding performance. Optimised for the F SPORT, these seats combine outstanding comfort with excellent support for the body during sports driving.

TAKUMI



Our Takumi craftspeople strive for perfection in every aspect of their work, actively seeking enhancements by applying constant care and dedication to their craftsmanship, blending their skills with the power of technology to better anticipate the future.

[DISCOVER MORE](#)



» EPISODE



EXTERIOR
Colours

The ES is available in a selection of captivating and stimulating exterior and interior colours. Its rich form shows a changing face to the world in different light conditions such as sunlight and streetlights at night, providing a dramatic view that changes with the location and time of day.



White Nova <083>^{1*}



Sonic Quartz <085>^{2*}



Graphite Black <223>^{*}



Vermillion <3R1>^{*}



Sonic Iridium <1L2>



Sonic Chrome <1L1>^{*}



Glacial Ecu <4X8>^{*}



Radiata Green <6X0>^{*}



Titanium <1J7>^{*}



Cobalt Mica <8X1>^{1*}



Deep Blue <8X5>^{2*}

^{*}Paint featured is an option available at additional cost.

¹ Available on F Sport only.

² Not available on F Sport.

Lexus Australia reserves the right to vary or discontinue the current interior and exterior colours, trims and colour/trim/model combinations. Colours and trims displayed are a guide only and may vary from actual colours due to printing/display process. See your Lexus dealer to confirm availability when ordering your vehicle. Overseas model shown. Australian specifications & features may differ. See your Lexus dealer for details.

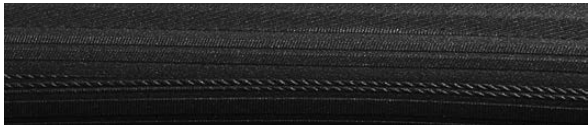
INTERIOR TRIMS

The journey begins with the finishing touches.

NULUXE (LUXURY)
NULUXE (ES 250 LUXURY + ENHANCEMENT PACK)



Interior Trim: Hazel

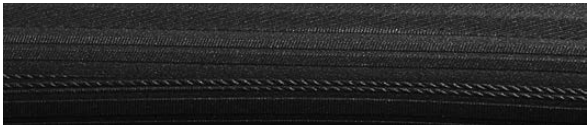


Ornamentation Option: 3D Film

NULUXE (LUXURY)
NULUXE (ES 250 LUXURY + ENHANCEMENT PACK)



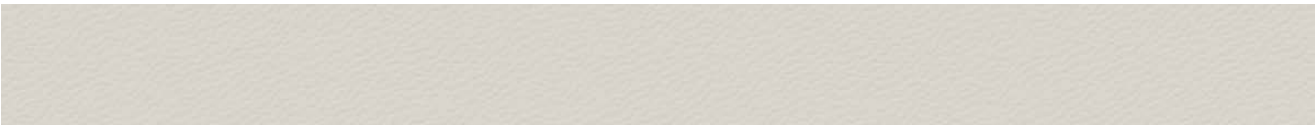
Interior Trim: Black



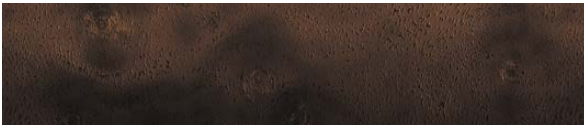
Ornamentation Option: 3D Film

[BUILD AND PRICE YOUR LEXUS](#)

SMOOTH LEATHER-ACCENTED (ES 300h LUXURY + ENHANCEMENT PACK)
SEMI-ANILINE LEATHER-ACCENTED (SPORTS LUXURY)



Interior Trim: Solis White



Ornamentation Option 1: Walnut Brown (Sports Luxury)



Ornamentation Option 2: Sumi Black (Luxury + Enhancement Pack)

SMOOTH LEATHER-ACCENTED (ES 300h LUXURY + ENHANCEMENT PACK)
SEMI-ANILINE LEATHER-ACCENTED (SPORTS LUXURY)



Interior Trim: Hazel



Ornamentation: Sumi Black

[BUILD AND PRICE YOUR LEXUS](#)

SMOOTH LEATHER-ACCENTED (ES 300h LUXURY + ENHANCEMENT PACK)
SEMI-ANILINE LEATHER-ACCENTED (SPORTS LUXURY)



Interior Trim: Mauve



Ornamentation Option 1: Sumi Black



Ornamentation Option 2: Walnut Brown¹

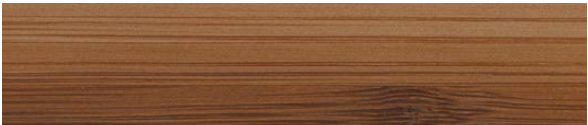
SMOOTH LEATHER-ACCENTED (ES 300h LUXURY + ENHANCEMENT PACK)
SEMI-ANILINE LEATHER-ACCENTED (SPORTS LUXURY)



Interior Trim: Black



Ornamentation Option 1: Sumi Black



Ornamentation Option 2: Bamboo¹

[BUILD AND PRICE YOUR LEXUS](#)

¹Available on Sports Luxury models only
Lexus Australia reserves the right to vary or discontinue the current interior and exterior colours, trims and colour/trim/model combinations.
Colours and trims displayed are a guide only and may vary from actual colours due to printing/display process. See your Lexus dealer to confirm availability when ordering your vehicle.
Overseas model shown. Australian specifications & features may differ. See your Lexus dealer for details.

NULUXE (F SPORT)



Interior Trim: F Sport White



Ornamentation Option: Hadori Aluminium

NULUXE (F SPORT)



Interior Trim: F Sport Black



Ornamentation Option: Hadori Aluminium

[BUILD AND PRICE YOUR LEXUS](#)

NULUXE (F SPORT)



Interior Trim: Flare Red



Ornamentation Option: Hadori Aluminium

[BUILD AND PRICE YOUR LEXUS](#)



Lexus Australia reserves the right to vary or discontinue the current interior and exterior colours, trims and colour/trim/model combinations. Colours and trims displayed are a guide only and may vary from actual colours due to printing/display process. See your Lexus dealer to confirm availability when ordering your vehicle. Overseas model shown. Australian specifications & features may differ. See your Lexus dealer for details.



LEXUS OWNERSHIP SOLUTIONS

Lexus Ownership Solutions allows you to determine your finance costs and know the Guaranteed Future Value (GFV) of your vehicle from the outset. It offers you choice, control and certainty. In short, everything you'd expect from Lexus.*

How does Lexus Ownership Solutions work?

- You choose the deposit that best fits your needs.
- You choose your term, ranging from 1 - 4 years.
- You decide on the estimated kilometres you think the vehicle will have travelled at the end of the term (the End Odometer). The End Odometer will also include any kilometres already on the vehicle.
- Lexus Financial Services (LFS) then determines the GFV+ of your vehicle and calculates your monthly repayments with a final payment equal to the GFV. The GFV is the minimum value of your Lexus at the end of your finance contract. So, if you choose to return your Lexus at the end of the term, LFS will pay you the GFV which will be put towards the remaining balance owing on your account (subject to fair wear and tear conditions and agreed kilometres being met).

The end of the term? Simply replace, retain or return.

At the end of your term you can choose to:

- Replace or sell your Lexus using the trade-in value or sale price to pay the remaining balance of your account.
- Retain your Lexus and simply pay the remaining balance of your account (including final payment).
- Alternatively, return your Lexus and, subject to fair wear and tear conditions and the agreed kilometres being met, we'll put the GFV towards the remaining balance on your account.

Choosing your deposit – what is best for you?

With the flexibility of Lexus Ownership Solutions, you can choose the deposit that best fits your current needs.

- If, for example, you have funds tied up in other investments, you can choose to finance your new Lexus with a zero deposit.††
- Alternatively, by using a larger deposit, you can lower your monthly repayments.
- Or, compared to other finance options over a similar term with no GFV or equivalent balloon final payment, Lexus Ownership Solutions can provide lower monthly repayments.++

Want more certainty?

With Lexus Ownership Solutions, you've got the reassurance that at the end of the term (subject to fair wear and tear and agreed kilometres being met), you will know the minimum value of your Lexus from the outset, as determined by LFS.+

What happens in the case of the unexpected?

If your vehicle incurs damage and does not meet the Fair Wear and Tear guidelines, LFS will give you the opportunity to have your vehicle repaired. Otherwise, LFS can organise the repairs and deduct the cost from your GFV. This adjusted GFV will then be the price that LFS will offer you if you return the vehicle at the end of your term. Of course, if you retain the vehicle, the condition doesn't matter, however, if you replace it or sell it privately, the condition will obviously impact your sale price.

So what does your accountant think?

Naturally, we think Lexus Ownership Solutions is an excellent, innovative way to put you in control of buying a new Lexus. That said, we suggest you seek independent advice to ensure Lexus Ownership Solutions is right for you.

Wouldn't it be great if Lexus Ownership Solutions was just the beginning?

Lexus' innovations and commitment to customer service extend well beyond Lexus Ownership Solutions. Once you purchase a new Lexus, you'll become a member of the Lexus Encore Owner Benefits Program and enjoy a host of exclusive benefits.†

For further details, simply visit your nearest Lexus dealer or see <https://www.lexus.com.au/about-lexus/story>

+ The Guaranteed Future Value (GFV) is the minimum value of your new or approved demonstrator Lexus at the end of your finance contract, as determined by Lexus Financial Services (LFS). If you decide to return your car to Lexus at the end of your term, LFS will pay you the agreed GFV which will be put against your final payment, subject to fair wear and tear conditions and agreed kilometres being met. The information provided is general in nature. You should seek your own financial advice to determine whether Lexus Ownership Solutions is appropriate for your individual circumstances. Please speak with your Lexus Dealer for more information. Terms, conditions, fees and charges apply. Lexus Ownership Solutions GFV products are available to approved customers of Lexus Financial Services, a division of Toyota Finance Australia Limited ABN 48 002 435 181, AFSL and Australian Credit Licence 392536.

++ Total interest charges will be higher if a GFV or balloon final payment is selected.

† Encore and Encore Platinum Benefits apply on selected new and demonstrator vehicles for a 3 year period, extended for a further 2 years limited services for UX Battery Electric Vehicle, from the date Encore is first activated by the Dealership. Inclusions may change without notice. Subject to availability. For full T&Cs and see your Lexus Dealer or [lexus.com.au/encore](https://www.lexus.com.au/encore).

†† Approved applicants only. Terms and conditions apply. A deposit may be required for capacity reasons.

ES MAIN FEATURES

FEATURES DESCRIPTION		ES 250		ES 300h		
		Luxury	F Sport	Luxury	F Sport	Sports Luxury
EXTERIOR	17" alloy wheels	•		•		
	18" alloy wheels			EP		•
	19" alloy wheels		•		•	
	Door handle illumination	•	•	•	•	•
	Heated door mirrors	•	•	•	•	•
	Moonroof	•	•	•	•	•
	Rear Spoiler		•	•	•	•
	Privacy glass	EP		•	•	•
INTERIOR	7-inch colour Thin Film Transistor (TFT) multi-information display	•		•		•
	8-inch colour Thin Film Transistor (TFT) multi-information display		•		•	
	Analogue clock with GPS correction function	•	•	•	•	•
	Centre console box	•	•	•	•	•
	Colour Head-Up Display	EP		•	•	•
	Cupholders (front and outboard rear seats)	•	•	•	•	•
	Door pockets (front and rear doors)	•	•	•	•	•
	Dual-Zone Climate Control	•	•			
	Dual-Zone Climate Control with humidity sensor			•	•	
	Tri-Zone Climate Control with humidity sensor					•
	Foot area illumination	•	•	•	•	•
	Lexus Climate Concierge with nanoeX™ ¹ Technology	•	•	•	•	•
	Leather-accented steering wheel and gear knob	•	•	•	•	•
	LED ambient illumination			EP		Walnut & Bamboo Ornamentation
	Power rear sunshade		•	EP	•	•
	Manual rear door sunshade			EP		•
	Vanity mirrors and lamps (front seats)	•	•	•	•	•
	Drive Mode Select - ECO / NORMAL / SPORT	•	•	•		•
	Drive Mode Select - ECO / NORMAL / SPORT S / SPORT S+ / CUSTOM				•	
	Electric park brake	•	•	•	•	•
OPERATION	Heated steering wheel				EP	•
	Panoramic View Monitor		•	EP	•	•
	Parking and clearance sonar	•	•	•	•	•
	Parking Assist monitor	•	•	•	•	•
	Handsfree power boot with kick sensor		•	EP	•	•
	Power tilt and telescopic steering column; auto-away / auto-return function		•	EP	•	•
	Rain-sensing wipers	•	•	•	•	•
	Smart Entry and Start System	•	•	•	•	•
	Smart Key Card	EP	•	•	•	•
	Steering wheel control switches	•	•	•	•	•
	Wireless phone charger ²	EP	•	•	•	•
NAVIGATION AND AUDIO	10-Speaker Lexus Premium Sound System; AM/FM radio, MP3 and WMA (Windows Media Audio) play compatible, DSP (Digital Signal Processor), ASL (Automatic Sound Leveliser)	•	•	•	•	
	Mark Levinson ^{®4} Premium Surround Sound System; AM/FM radio, 17 speakers, MP3 and WMA play compatible, DSP, ASL, Clari-Fi				EP	•

ES MAIN FEATURES

FEATURES DESCRIPTION		ES 250		ES 300h		
		Luxury	F Sport	Luxury	F Sport	Sports Luxury
NAVIGATION AND AUDIO	12.3" multimedia touchscreen	•	•	•	•	•
	USB Charging Ports ³	4; 2 (EP)	2	2	2	2
	Wireless Apple CarPlay [®] & Wired Android Auto ^{™4}	•	•	•	•	•
	Bluetooth ^{®5} mobile phone connectivity, hands free calling, wireless connect	•	•	•	•	•
	DAB+	•	•	•	•	•
	Satellite Navigation System ⁶ with SUNA Live Traffic Updates ⁷	•	•	•	•	•
SEATS	Power front seat – Driver	10-way	10-way with memory	10-way; 14-way with memory (EP)	10-way with memory	14-way with memory
	Power front seat – Passenger	10-way	10-way	10-way	10-way	12-way with memory
	Heated front seats	•	•	•	•	•
	Ventilated front seats		•	EP	•	•
	Heated outer rear seats					•
	Power outer rear seat recline and adjust					•
	Nuluxe interior trim	•	•	•	•	
	Smooth leather-accented seats			EP		
	Semi-aniline leather-accented seats					•
SAFETY	Lexus Safety System+ 2, including Pre-Collision System with Pedestrian & Daytime Cyclist Detection, Lane Trace Assist (LTA), Automatic High Beam (Luxury models)/Adaptive High-Beam System (F Sport & Sports Luxury models), Radar Active Cruise Control, Road Sign Assist (RSA) (Speed signs only), Intersection Turning Assist, Emergency Steering Assist	•	•	•	•	•
	10 SRS airbags	•	•	•	•	•
	Lexus Connected Services – including (SOS) Emergency Call, Automatic Collision Notification & Stolen Vehicle Tracking ⁸	•	•	•	•	•
	Bi-Beam LED headlamps; auto-levelling system	•		•		
	3-eye Bi-Beam LED headlamps; auto-levelling system		•		•	•
	Headlamp cleaners		•		•	•
	LED Cornering Lamps	•	•	•	•	•
	LED Daytime Running Lamp (DRL)	•	•	•	•	•
	3-Point ELR Seatbelts (all seats)	•	•	•	•	•
	TPWS (Tyre Pressure Warning System)	•	•	•	•	•
	Anchor bars for fixing ISOFIX-compliant child seat (outboard rear seats)	•	•	•	•	•
	Rear Seat Reminder	•	•	•	•	•
	Anti-lock Brake System (ABS) with Electronic Brake force Distribution (EBD)	•	•	•	•	•
	Automatic anti-glare mirrors (interior)	•	•	•	•	•
	Blind Spot Monitor System	•	•	•	•	•
	Brake Assist System	•	•	•	•	•
	Hill-Start Assist Control	•	•	•	•	•
	Parking Support Brake (PKSB)	•	•	•	•	•
	Pretensioners and force limiters (front seats)	•	•	•	•	•
	Security system; alarm, immobiliser system	•	•	•	•	•
	Traction Control System (TCS)	•	•	•	•	•
	Vehicle Stability Control (VSC)	•	•	•	•	•

¹ Product & company names are trademarks of their respective owners.
² Only Qi-supported devices compatible. Refer to device manufacturer.
May require additional purchase of accessory to support wireless charging.
³ Compatibility and functionality varies depending on device.
⁴ Requires compatible device, USB connection, mobile data, network reception & GPS signal. Mobile usage at user's cost. Apps subject to change. For details see lexus.com.au/connectivity. CarPlay[®] is a trademark of Apple, Inc. registered in the U.S. and other countries. Android Auto[™] is a trademark of Google LLC.

⁵ Bluetooth[®] is a registered trademark of Bluetooth SIG, Inc. Compatibility and functionality varies depending on device.
⁶ Coverage varies based on vehicle location.
⁷ Service varies based on vehicle location. See sunattraffic.com.au.
⁸ Not available outside Australia or if services are disabled or terminated. Dependant on 4G enabled DCM, GPS signal strength, mobile network coverage and other factors outside Lexus' control which can limit the ability or functionality of the system. Check your Owner's Manual for explanation of limitations. Please drive safely.
⁹ Product & company names are trademarks of their respective owners.

ES SPECIFICATIONS

SPECIFICATIONS DESCRIPTION		ES 250	ES 300h
DIMENSIONS AND WEIGHT (APPROXIMATE) ¹	Overall Length (mm)	4975	4975
	Overall Width (mm)	1865	1865
	Overall Height (mm)	1445	1445
	Wheelbase (mm)	2870	2870
	Tread (mm)	Front: 1600/Rear: 1610 – Luxury Front: 1590/Rear: 1600 – F Sport	Front: 1600/Rear: 1610 – Luxury Front: 1590/Rear: 1600 – Luxury + EP, F Sport & Sports Luxury
	Maximum Kerb Weight (kg)	1680	1740
	Gross Vehicle Mass (GVM) (kg)	2110	2150
	Seating Capacity	5	5
	Boot Capacity (L)	454	454
CHASSIS	Suspension	Front: MacPherson Strut Type, Rear: Trailing Wishbone	Front: MacPherson Strut Type, Rear: Trailing Wishbone
	Steering System	EPS (Electric Power Steering)	EPS (Electric Power Steering)
	Brakes (mm)	Front: 305/28 Ventilated Discs Rear: 281/12 Solid Discs	Front: 305/28 Ventilated Discs Rear: 281/12 Solid Discs
	Minimum Turning Radius (Tyres)	5.8m (Luxury), 5.9m (F Sport)	5.8m (Luxury) 5.9m (Luxury + EP, F Sport & Sports Luxury)
	Fuel Tank Capacity (L)	60	50
	Tyres	215/55R17 94V (Luxury) 235/40R19 96Y (F Sport)	215/55R17 94V (Luxury) 235/40R19 96Y (F Sport) 235/45R18 94Y (Luxury + EP; Sports Luxury)
ENGINE	Type	Petrol	Petrol
	Description	2.5L 4-cylinder, Inline type, 16-Valve, DOHC, VVT-iE (intake), VVT-i	2.5L 4-cylinder, Inline type, 16-Valve, DOHC, VVT-iE (intake), VVT-i
	Capacity (cc)	2487	2487
	Maximum Power	152kW @ 6600rpm	131kW @ 5700rpm
	Maximum Torque	243Nm @ 4000-5000rpm	221Nm @ 3600-5200rpm
	Fuel Economy (Combined, L/100km) ²	6.6 (Luxury), 6.8 (F Sport)	4.8
	Carbon Dioxide (Combined, g/km) ³	150 (Luxury), 156 (F Sport)	109
DRIVETRAIN	Driven Wheels	FWD	FWD
	Transmission	Direct shift-8AT	Electronic continuously variable transmission
MOTOR	Type		Permanent magnet motor
	Max. Output (kW)		88
	Max. Torque (Nm)		202
	Total System Output (kW)		160
BATTERY	Type		Sealed Ni-MH (Nickel-Metal Hydride)



¹Weights/mass/volumes/dimensions are approximate and subject to individual vehicle variances, and should be confirmed before fitting any accessories, towing or otherwise relying on this value.

²Achieved in test conditions for comparison purposes only. Actual fuel consumption varies depending on driving conditions/style, vehicle condition, load and options/ accessories fitted.

³Results produced in laboratory test conditions, using sample vehicles without fitment of accessories/customisation, & do not reflect real world driving. Figures should only be used for comparative purposes.

*Luxury models.
^ES 300h Luxury + EP, F Sport & Sports Luxury models.
Overseas model shown. Australian specifications & features may differ. See your Lexus dealer for details. Lexus Australia uses its best endeavours to ensure material is accurate at the time of publishing. All information must be confirmed with your Lexus dealer at the time of ordering, as specifications, applicability and availability may change over time. Colours depicted are a guide only and may vary from actual colours due to the printing/display process. Lexus Australia reserves the right to change and/ or discontinue, without notice, models, prices, colours, materials, equipment, specifications. To the extent permitted by law, Lexus Australia will not be liable for any damage or loss incurred from relying on the information and images contained in this material. Distributed nationally by Lexus Australia a division of Toyota Motor Corporation Australia Limited ABN 64 009 686 097. Proof: L2022-018496. Published: September 2022.